



CARGO FLOOR[®]

HORIZONTAL LOADING-/UNLOADING SYSTEM

Only Quality generates Quality![™]



- 👉 the lightest...
- 👉 the strongest...
- 👉 simply the best!!

HIGHLIGHTS OF THE ULTIMATE STANDARD

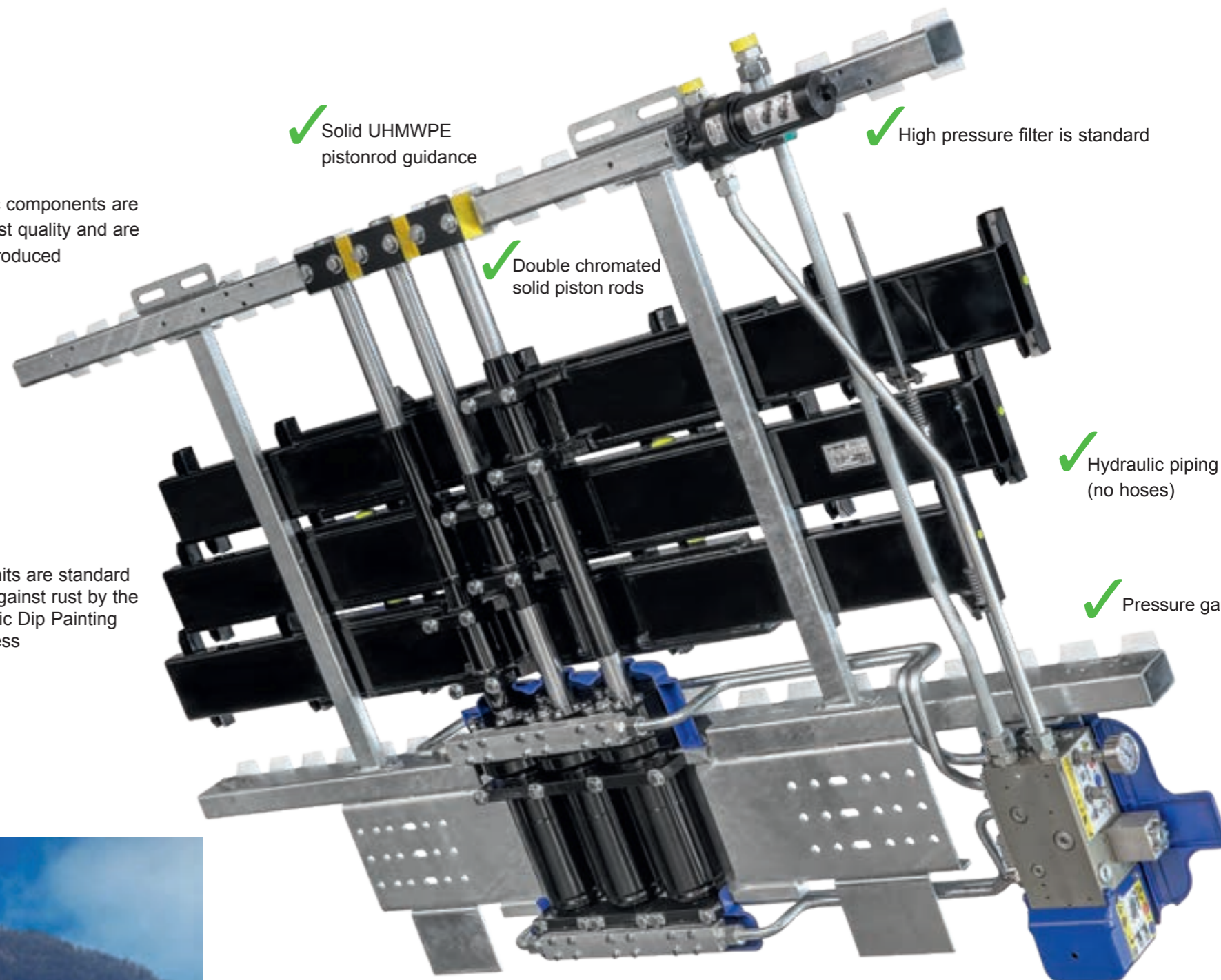


- 👍 more payload
- 👍 quicker discharge
- 👍 lowest cost of ownership

✓ All hydraulic components are of the highest quality and are fully CNC produced



✓ The drive units are standard preserved against rust by the best Cathodic Dip Painting (CDP) process



✓ Solid UHMWPE pistonrod guidance

✓ High pressure filter is standard

✓ Double chromated solid piston rods

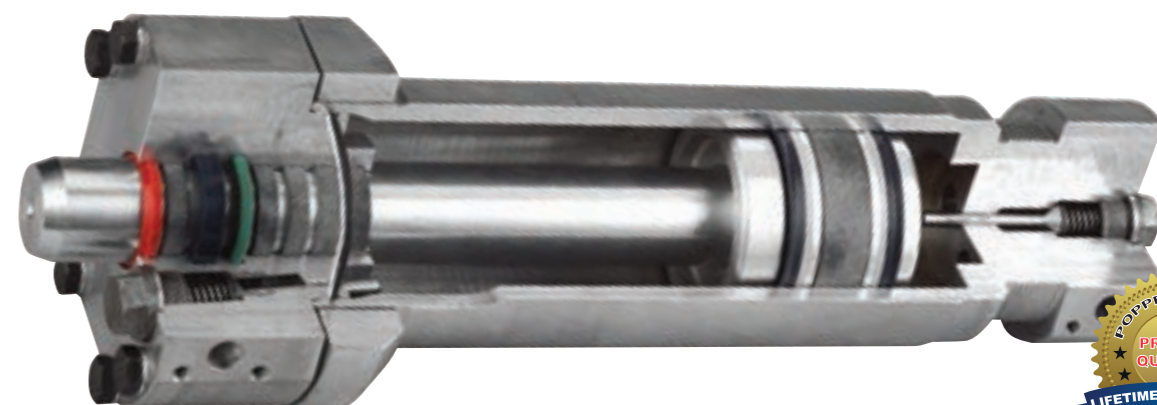
✓ Hydraulic piping (no hoses)

✓ Pressure gauge

✓ All valves/cylinders are protected against road dirt

✓ Common-rail technology

✓ The control valve is positioned at the outside of the trailer for easy access



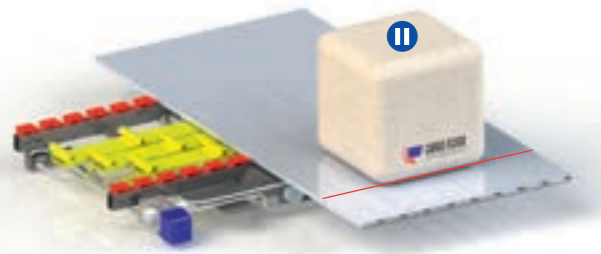
✓ Poppet valves, NO LEAKAGE.



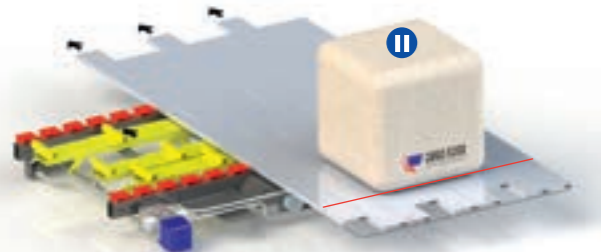


HOW IT WORKS

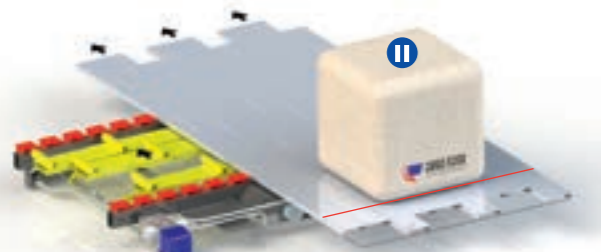
The Cargo Floor 'moving floor' System is a multi-functional, horizontal loading and unloading system for the fast and efficient transport of almost any product. The system is ideal for unloading a wide variety of bulk products, which are typically loaded from above and unloaded horizontally from the rear. It works in two directions and can be used to both load and unload product.



Step 1: three hydraulic cylinders move the entire floor with the cargo in the desired direction



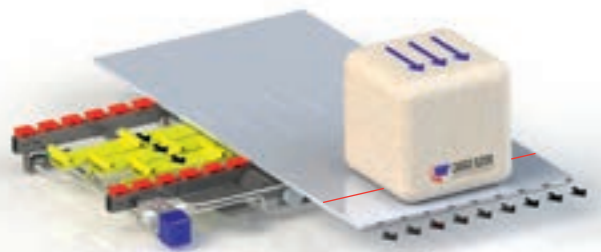
Step 2: one hydraulic cylinder will move a third of the floor section back underneath the cargo. Most of the floor remains still and the cargo will slightly move if at all



Step 3: the second hydraulic cylinder will move the next third of the floor section back underneath the cargo. Most of the floor remains still and the cargo will slightly move if at all



Step 4: the third hydraulic cylinder will move the final floor section back underneath the cargo. Most of the floor remains still and the cargo will slightly move if at all



Step 1 is repeated moving the cargo in the desired direction. The loading/unloading time is based on the hydraulic system, but normal cycle time is 3-10 minutes for a 45 foot trailer



Use your smartphone for wireless remote control

BT determines the range and can be limited and vary!



EASY CONTROL OPTIONS

The modular construction of the Cargo Floor System makes the following features possible and retrofittable

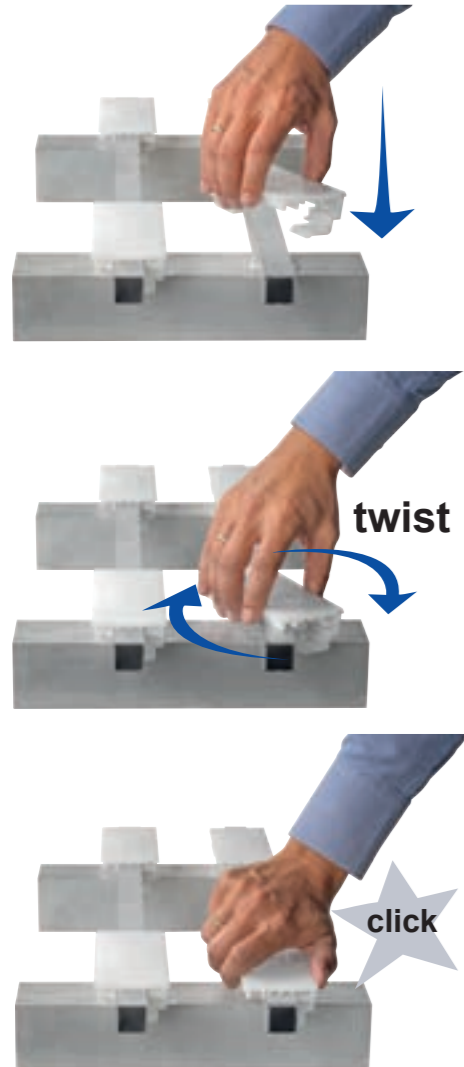


Protection covers

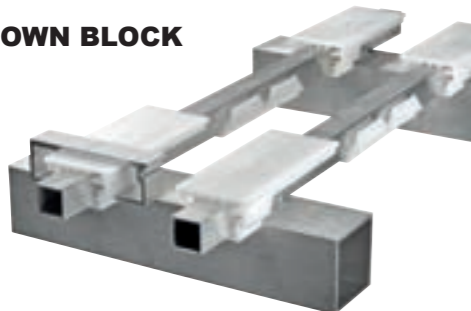
| Type | Operation | Valve | Fixed on trailer | Optional |
|----------|--|-------|--------------------|-----------------------------|
| E | Loading/stop/unloading over a switch On/off by switch | | Control Module | Wireless Remote Control |
| B | Loading/stop/unloading over a manual handle On/off by switch | | Control Module | Wireless Remote Control |
| A | Loading/stop/unloading over a manual handle On/off by PTO No electrics | | NA | NA |

THE CARGO FLOOR TRAILER

THE TWISTER BEARING BLOCK can be installed easily without any tools to the subdeck tube or U profile supplied by the trailer builder. The floor profile design has the thickest wall where the weight is supported providing maximum stability even under heavy loads. The aluminum is resistant to dirt and grime from the road, and the design gives you maximum stability under heavy loads, each has a large sliding surface of 13.5 in².



HOLD DOWN BLOCK

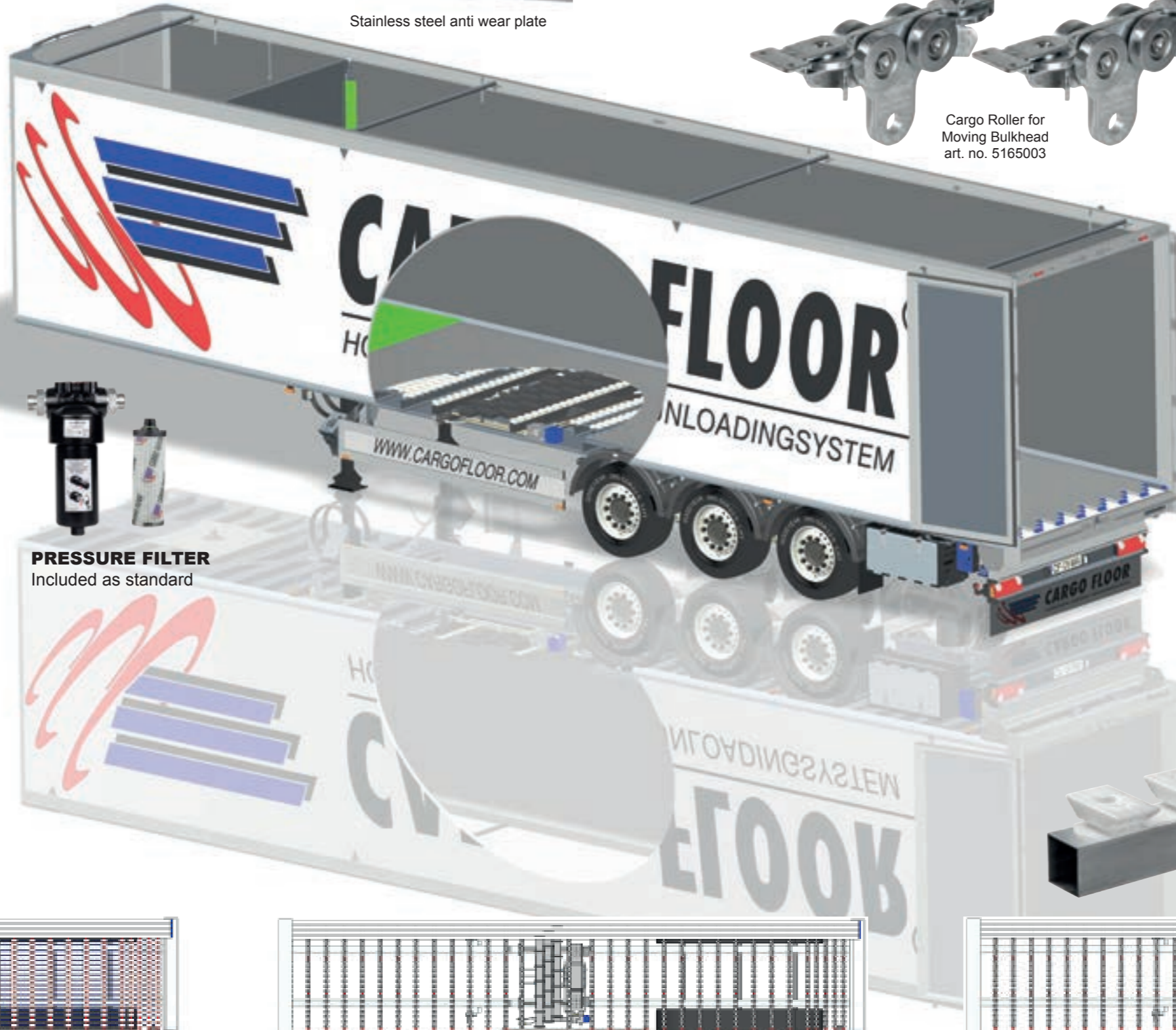


ENDCAPS SAFE + CLEAN

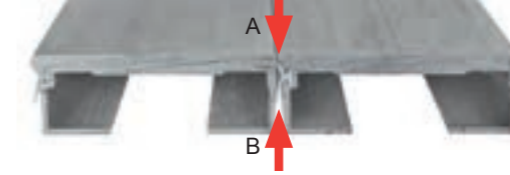
The Cargo Floor system has 45° angled endcaps that seal the floor profiles. This keeps cargo out of the floor and eliminates pinch points. No body harm (health and safety)



Stainless steel anti wear plate



PRESSURE FILTER
Included as standard



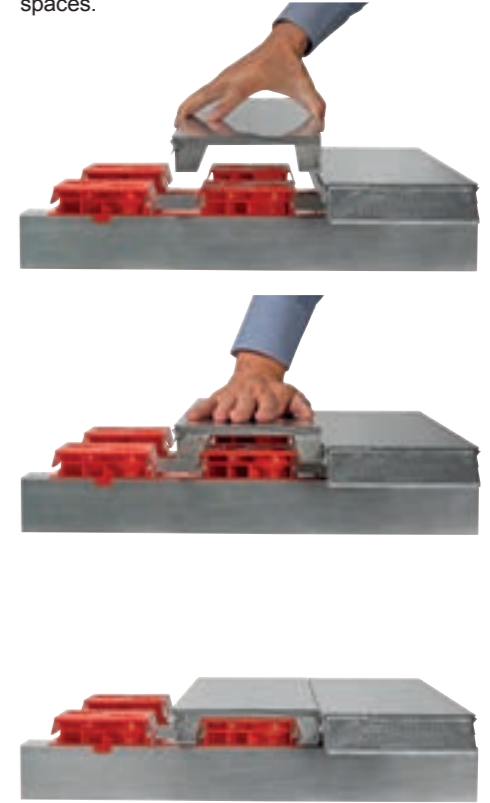
The **SEAL** between the floor slats is made of a unique plastic composite (Nobraforte) and can outlast the aluminum. The seal has a double function to prevent the cargo from leaking through the floor ↓(A) and blocks dirt and water entering the trailer. ↑(B)



Cargo Roller for Moving Bulkhead art. no. 5165003

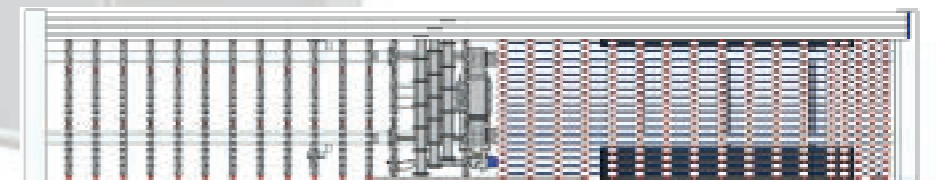
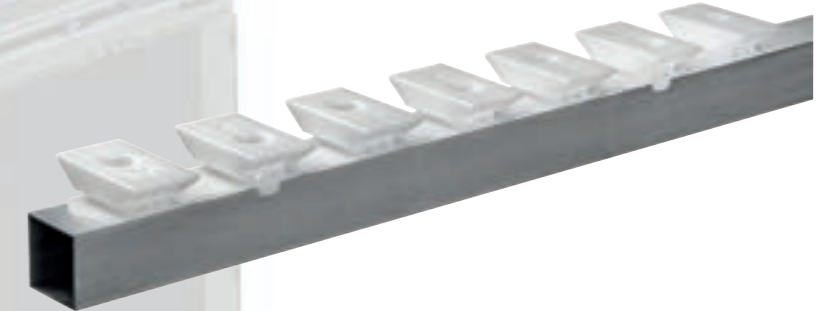
FLOOR MOUNTING

Flexible system that can be installed by either sliding in the floor profiles or clicked in from above without any sliding. Helpful in limited spaces.



PLASTIC BEARING BLOCK COMB

Can be mounted by screws or rivets directly on top of the cross members. Eliminates the need for a subdeck.



APPLICATIONS

The standard Cargo Floor 'moving floor' System is ideally suited to the transport of almost all common products. In addition to the standard system, Cargo Floor also has a range of different drive units and floor sections available for special applications. The range of sections encompasses narrow or broad and ribbed or smooth sections in a variety of thicknesses. Sections are also available in a variety of materials (aluminum/steel/composite/plastic, or any combination of these materials).

Cargo Floor has proven its quality in the transport of materials such as:

- | | | |
|-------------------|-----------------------|-----------------------------|
| • bulk materials | • straw bales | • chalk |
| • RDF (fluff) | • maize | • coal |
| • biomass | • grain | • waste paper |
| • recyclables | • potatoes | • rolls of paper |
| • domestic waste | • carrots | • aluminum scrap |
| • green waste | • tapioca | • cargo (bales / bags) |
| • wood chippings | • milk powder | • big bags |
| • sawdust | • coffee beans | • pallets |
| • bark | • soya beans | • slaughter waste |
| • logs of wood | • alfalfa | • sewage sludge |
| • potting soil | • sugar beet and pulp | • compressed bales |
| • peat | • chicken feed | • all agricultural products |
| • clay | • manure | • etc. |
| • bleaching earth | • fertilizer | |
| • straw | • salt | |

When used in combination with the special allu heavy duty or steel slats (see pictures) the Cargo Floor can also be used for the trouble-free transport of the following products: (ask your dealer)

- | | |
|----------|--------------------------------|
| • glass | • sharp sand |
| • gravel | • vegetables and fruit |
| • ore | • all other abrasive materials |

Forklift truck

All Cargo Floor floors can be driven on by a forklift, contact your installer for details on the permitted weights.

Efficiency

Efficiency of loading and unloading (packed) cargo is determined mainly by the weight distribution of the cargo over the floor area of the Cargo Floor. Uneven weight distribution will reduce efficiency and may even cause the cargo to only move back and forth during the power stroke of the system. Supports can be used in these scenarios to improve weight distribution across the floor.



MULTIFUNCTIONAL



LR-series Leak Resist

Cargo Floor is committed to protecting the planet and has developed the Leak Resist floor to prevent products leaking onto the road and contaminating the environment.

Cargo Floor has over 20 years' experience with various unique Leak Proof and Leak Resist floor solutions. The solutions are either with standard drives or with dedicated Front Mount Drives where a Cargo Floor drive system is mounted in the front of the trailer.

By using the Cargo Floor LR-series, liquid-containing "waste" products can be transported in a safe and environmentally sound manner.

Cargo Floor has developed a unique slide-in subdeck design where the standard Cargo Floor drive unit is mounted UNDER the floor. This subdeck design has been in operation for many years and has proven to be the ultimate solution for preventing leakage onto the road while providing superior stability and impact resistance.





With the supply of the unique Cargo Leak Proof Subdeck, a regular sub-floor will not be required anymore. The simple 'slide-in' system of the subdeck profiles makes installation fast and easy in both new and retrofit applications.

Unlike the 100% Leak Proof system, the bodybuilder does not need to make any modifications to the vehicle for mounting the Cargo Leak Resist application. In addition to the weight advantage, it also has a higher carrying capacity as the inclined sealing bulkhead is not used.

A solid bearing is installed across the entire length of the trailer directly under the moving floor profiles that eliminates the need for an end sealing section and keeps the product from contacting the solid underfloor bearing block during transport. There are various deck-slats available in aluminium as well as in steel.

The gutter between the moving floor profiles is largely self-cleaning, but thanks to its open shape, it can easily be cleaned with a broom or pressure washer (the gutter is closed on the LR-sealed floor system).

The LR floor is not guaranteed to be 100% leak proof*

-  **standard 'center' drive**
-  **high impact resistant**
-  **leak resist**
-  **maximum volume**



Multifunctionality



Leak resistance



Cleanability



Pallet/bales transport



Drive over with a fork lift truck



Impact resistance



Leak Resist Subdeck



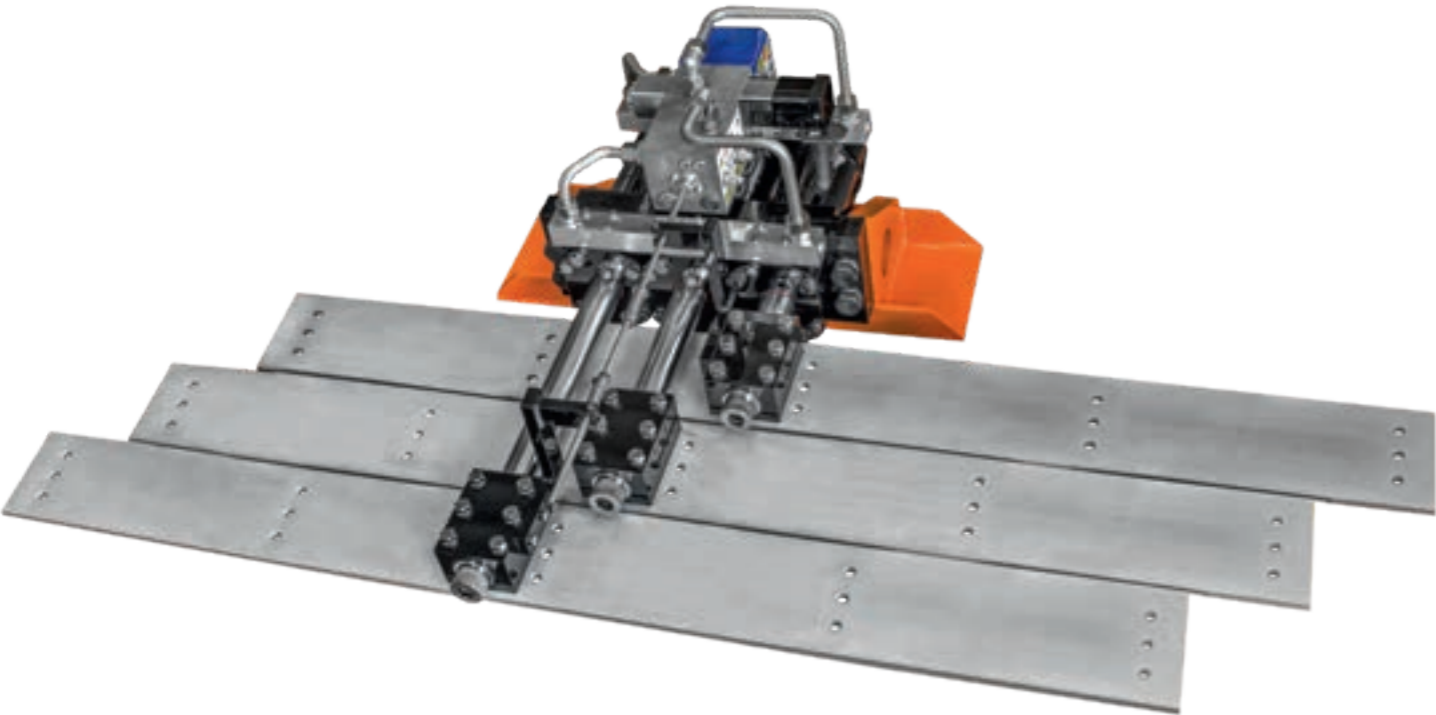
Only cut outs in subdeck for connecting drive-shoes to slat.

THE CARGO FLOOR LEAK RESIST WITH UNDERMOUNT DRIVE UNIT IS THE ULTIMATE SOLUTION FOR PROTECTING THE ENVIRONMENT FROM LIQUID-CONTAINING PRODUCTS DURING TRANSPORT. IT IS COMPATIBLE WITH ALL STANDARD CARGO FLOOR DRIVE UNITS.



*** Important Note**
The LR-series is resistant to leaks and is NOT designated as 100% leak proof because of the undermount drive unit construction. Any leakage that may occur should only be possible at the joint between the drive system and the floor profiles. A collector bin can be installed to prevent any spilling on the floor.

LP-series 100% Leak Proof



A compact waterproof system

This 100% leak proof Cargo Floor system has been developed for transporting environment-polluting products, both in the form of loose bulk material and compressed bales.

The system is perfectly suited for transporting and storing domestic and vegetation waste.

The unique and compact design of the Front Mount Drive system helps achieve a 100% leak proof moving floor. It is located in the head radius to maximize loading space and protect the drive system.

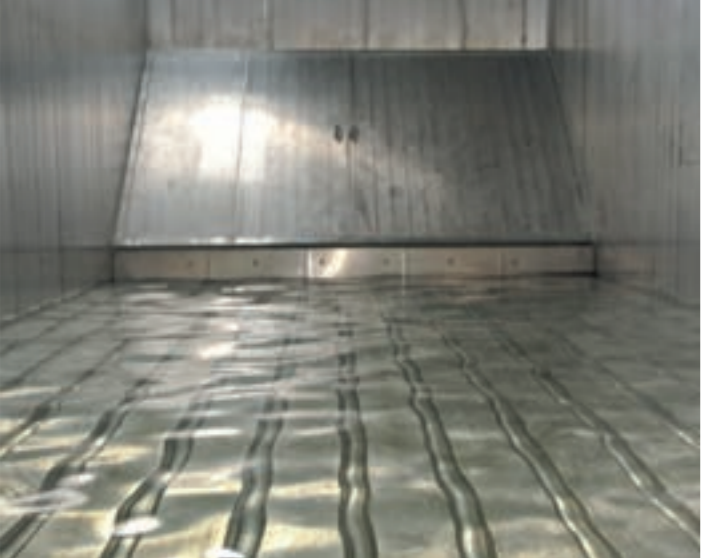
The aluminum sub-deck easily installs on both steel and aluminum cross members and can be secured to the sub-floor members outside of the waterproof section by either screws or rivets. The subfloor sections are easily slid into place and become 100% waterproof with sealant.

The aluminum floor sections are supported by solid plastic bearing blocks along their entire length. Standard aluminum sections as well as Heavy Duty Impact (HDI) sections are available. HDI sections are designed for jobs with high loads on the floor.



Drive; CF3 LP-4.9 Leak Proof

- 👉 X-treme robust
- 👉 compact
- 👉 more payload 39t.
- 👉 more volume



CF350 CD-3.9 'Container Drive'



This ultra-low built Cargo Floor Drive is specially designed to mount in a 20ft, 40ft or 45ft container. The CF350 CD has the lowest built height for a drive able to carry 39t of payload. The installation can be easily done to fixate it to the existing under rail of the container with limited reinforcement.

Mounting this system in a container creates a self-unloading container for when you want to haul large quantities of bulk product like household waste, wood shavings, waste paper etc. and use intermodal transportation. The containers can be put on a train to be transported to a port or incineration energy plant using readily available standard container chassis instead of dedicated trailers. For the unloading you can use either the TK-unit from the tractor unit or a standalone power pack generator.

The containers can also be used as stationary self-unloading bunkers to transfer bulk product to the processing plant.

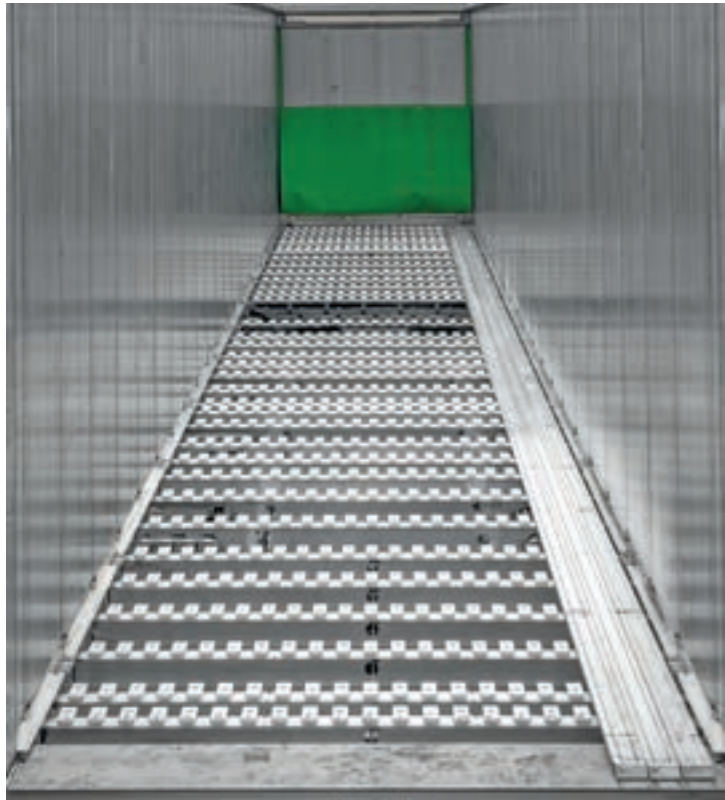
The CF350 CD drive unit can also be used in all other applications where the lowest built in height is of most importance.

XHDI-XD 'X-treme Durable'

aluminum slats in hard alloy



Subdeck and Guidance



Comb bearing, no subdeck (ultra light)

- 👍 integrated slats hold down
- 👍 easy mounting, pop rivets instead of welding



Twister bearing subdeck box sections 1"x1"

- 👍 bearings mounted by a simple twist
- 👍 integrated slats hold down

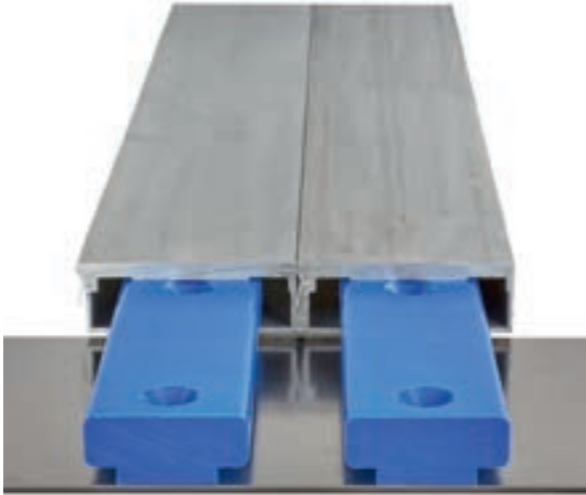


Aluminum endcap

- 👍 clean
- 👍 safe 'no bodily harm' (health & safety)
- 👍 no product contamination
- 👍 less wear
- 👍 slat hold down inside!



45° angle
works like a bulldozer



T-block

- 👎 product contamination
- 👎 more wear
- 👎 potential jamming



plastic floorslat UHMW with T-block



CSC
'Cargo Slat Connector'

effective when transport of floor profiles becomes expensive!



TECHNICAL SPECS



Center-mount (Perimeter-mount)



CF500 SLC-3.9 (Power Speed)*



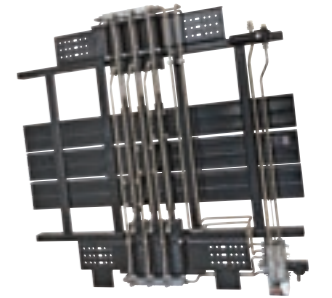
CF600 HDC-4.7



CF350 CD-3.9 'Container Drive'



CF3 LP-4.9



CF800 HD-6 cyl.

| | | CF500 SLC-3.9 (Power Speed)* | | CF600 HDC-4.7 | | CF350 CD-3.9 'Container Drive' | | CF3 LP-4.9 | | CF800 HD-6 cyl. | |
|--|--------|-------------------------------------|---------------|----------------------|---------------|---------------------------------------|---------------|-------------------|---------------|------------------------|---------------|
| | | <i>Imperial</i> | <i>metric</i> | <i>Imperial</i> | <i>metric</i> | <i>Imperial</i> | <i>metric</i> | <i>Imperial</i> | <i>metric</i> | <i>Imperial</i> | <i>metric</i> |
| Weight (from) | lbs | 992 | 450 | 1186 | 538 | 1000 | 455 | 683 | 310 | 2288 | 1038 |
| Available in Cargo Bulkmove execution | | yes | (yes)* | yes | yes | yes | yes | yes | yes | yes | yes |
| Operating possibilities | | E/B/A | (B/A)* | E/B/A | E/B/A | E/B/A | E/B/A | E/B/A | E/B/A | E/B/A | E/B/A |
| Cylinder bore | inch | 3.9 | 100 | 4.7 | 120 | 3.9 | 100 | 4.9 | 125 | 3.9 | 100 |
| Piston rod diameter | inch | 1.8 | 45 | 1.8 | 45 | 1.8 | 45 | 2.4 | 60 | 2.16 | 55 |
| Working stroke | inch | 7.9 | 200 | 7.9 | 200 | 7.9 | 200 | 5.9 | 150 | 7.9 | 200 |
| Cylinder volume | Gallon | 0.7 | 2.82 | 1.1 | 4.2 | 0.7 | 2.82 | 0.9 | 3.26 | 1.4 | 5.3 |
| Oil volume per cycle | Gallon | 2.2 | 8.45 | 3.3 | 12.6 | 2.2 | 8.45 | 2.6 | 9.77 | 4.23 | 16 |
| Working pressure | PSI | 2500 | 170 | 1900 | 130 | 1900 | 130 | 1800 | 125 | 2500 | 170 |
| Max. pressure | PSI | 3300 | 225 | 2500 | 170 | 2500 | 170 | 2200 | 150 | 3300 | 225 |
| Advised oil flow per minute | Gallon | 29 | (48)* | 110 | (180)* | 34 | 130 | 29 | 110 | 29 | 110 |
| Max. oil flow per minute | Gallon | 34 | (53)* | 130 | (200)* | 42 | 160 | 34 | 130 | 34 | 130 |
| Pressure filter | micron | 10 | (2x10)* | 10 | (2x10)* | 10 | 10 | 10 | 10 | 10 | 10 |
| Speed at advised oil flow per minute | ft/min | 8.5 | (14.1)* | 2.6 | (4.3)* | 6.9 | 2.1 | 8.5 | 2.6 | 4.6 | 1.4 |
| Speed at max oil flow per minute | ft/min | 10.2 | (15.4)* | 3.1 | (4.7)* | 8.5 | 2.6 | 10.2 | 3.1 | 5.2 | 1.6 |
| Theoretical unloading time trailer 13.6mtr/45 ft | min | 6 | (3)* | 6 | (3)* | 7 | 7 | 6 | 6 | 12 | 12 |
| Max. loading capacity | lbs | 88000 | 40 | 110000 | 50 | 77000 | 35 | 77000 | 35 | 176500 | 80 |
| Max. loading capacity | ton | 44 | 40 | 44 | 40 | 39 | 33 | 39 | 35 | 88 | 80 |
| Advised pump capacity (2-line system): | | | | | | | | | | | |
| Flow per minute | gpm | 29 | (48)* | 110 | (180)* | 29 | 110 | 29 | 110 | 29 | 110 |
| Max. Pressure | PSI | 3600 | 250 | 3000 | 200 | 3600 | 250 | 2500 | 175 | 3600 | 250 |
| Pressure piping diameter | inch | ¾x0.08 | (1x0.08)* | 20x2 | (25x2)* | 1x0.08 | 25x2 | ¾x0.08 | 20x2 | ¾x0.08 | 20x2 |
| Return piping diameter | inch | 1x0.08 | (1½x0.08)* | 25x2 | (30x2)* | 1½x0.08 | 30x2 | 1x0.08 | 25x2 | 1x0.08 | 25x2 |
| Oil tank filling at advised flow | Gallon | 29 | (48)* | 110 | (180)* | 26 | 100 | 29 | 110 | 26 | 100 |
| Oil tank filling at max. flow | Gallon | 34 | (53)* | 130 | (200)* | 34 | 130 | 34 | 130 | 34 | 130 |
| Max. oil temperature | °F | 210 | 100 | 210 | 100 | 210 | 100 | 210 | 100 | 210 | 100 |

Oil type: mineral and biological (HEES)

Normal temperature range 5 < 86 °F / -15 < 30 °C ISO VG32
 Low temperature range -13 < 32 °F / -25 < 0 °C ISO VG22
 High temperature range 59 < 104 °F / 15 < 40 °C ISO VG46



ABOUT HYVA

Hyva is one of the world's leading providers of innovative and highly efficient transport solutions for the commercial vehicle and environmental service industries. With over 20,000 customers and more than 40% global market share in front-end tipping cylinders, Hyva's solutions move the world. Today, after being in operation for more than 40 years, Hyva is present in 110+ countries, has more than 30 fully-owned subsidiaries, has reached extraordinary service coverage and a manufacturing base that includes 12 production facilities across China, India, Brazil and Europe.

HYVA, YOUR WORLDWIDE SOLUTIONS PROVIDER

The growth and success of Hyva is built on two key aspects of its operation: the quality and innovative nature of the company's solutions, and the excellence of its customer support. The first of these, product quality, is illustrated by the fact that Hyva today offers the strongest front-end hydraulic telescopic cylinder in the world, as well as a full range of double acting cylinders, fixed mounted and rolling truck cranes, container lifting systems (hookloaders and skiploaders) and waste collection units. They are solutions which are used worldwide across a range of sectors including transport, construction, mining, materials handling and environmental services providers.

Service quality, too, is a fundamental part of the Hyva business philosophy: With operations in more than 110 countries, the company operates one of the world's most extensive customer support networks in the industry. It is a network which has earned Hyva an international reputation for excellence in customer care.

HYVA (U.S.A) CORPORATION

300 King Street
Elk Grove Village
Illinois 60007
United States of America
T: +1 630 227 9020
E: salesusa@hyva.com



ABOUT CARGO FLOOR

Cargo Floor is the global leading manufacturer of horizontal (un)loading **Moving Floor** systems. With over 30 years of experience in the industry, Cargo Floor delivers excellent quality with the very highest levels of customer service and support. **Globally recognized as a market leader**, our products are made in an ISO 9001-2015 certified manufacturing plant. Before delivery, every moving floor system is rigorously tested for function, size, and sealing to ensure that each product is easy to install by its customers and functions as designed. Cargo Floor is proudly made in the Netherlands and exported all over the world.



Innovative

We pride ourselves on our experience working with OEMs to design and build the best possible (un) loading systems. Combining this experience with feedback from transport companies, material handling experts, and logistic managers ensures we are able to develop the most reliable, strongest, and most durable system for every application, while still being lightest moving floor system available. We strive to be the most innovative manufacturer and supplier of moving floor systems on the planet by using the very latest technology and state of the art components. All Cargo Floor drive units are powered by hydraulics and mechanically driven by internal valves to prevent contaminants like dust dirt and grime from impacting performance.

